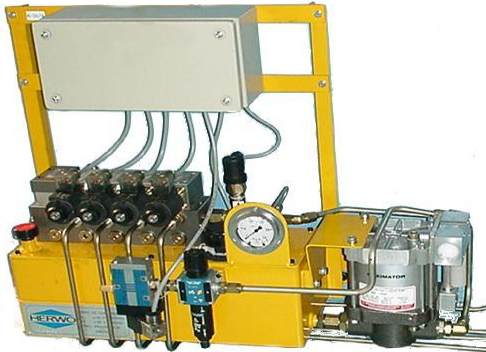


HLA is a pneumatic driven hydraulic power pack unit strictly developed for clamps and die lifters. Completely sealed seat valves, safety-relieve valve, float- and pressure switch manometers and approved documentation for electricity/hydraulic is included.

HLA is easy to install and adaptable to various circuits and functions.



The Aggregate in the picture is additionally equipped with a larger pump.



Control- box -1E

**Advantages:** Compact design. Absolutely maintenance-free.

**Info:** Max 250 bar, normal work pressure 200 bar. Complies with existing standards and safety regulations.

**Included:** Each power pack unit comes with a control-box, key switches and light indicator for low oil level and/or low oil pressure plinth box with automatics.

**To be considered when ordering:** State number of circuits and valves as well as required length of cable between the connection block and the control box. Also state voltage to valves as well as existing stop circuits of the press.

**Advice:** An extra vent-function for installation of a pilot- operated non-return valve for each clamp in the slide ensures that the die is still in a secure position during pressure fall. This may occur when for instance there is damage on the hose in the circuit for clamps in the slide.

Type	No. of Valves	A	B	C	D	E	F	G	H	I						
HLA-250-5-1E	1	550	380	410	480	110	300	150	150	120						
HLA-250-5-2E	2	550	380	410	480	110	300	150	150	120						
HLA-250-5-3E	3	550	380	410	480	110	300	150	150	120						
HLA-250-10-4E	4	550	480	510	580	110	300	150	150	120						
HLA-250-10-5E	5	550	480	510	580	110	300	150	150	120						
HLA-250-15-6E	6	550	630	660	730	110	300	150	150	120						
HLA-250-15-7E	7	550	630	660	730	110	300	150	150	120						
HLA-250-15-8E	8	550	630	660	730	110	300	150	150	120						

HLA= Hydraulic air aggr. manoeuvre box    -250 = Max pressure bar    - 5 alt 10 = stipulates oil level in tank    - 1 = Number of valves    E= electricity

