

The SCH hydraulic clamp is signified by its high clamping capacity in spite of its small size and low weight.



**Advantages:** High clamping force easily replaces low weight manual bolts, does not require any space outside the die. Clamps within 5-10 seconds depending of number of clamps.

**Advice:** Inspect your T-slots, as on certain press tables the T-slots might be deformed or damaged. If this is the case, grinding should reshape the T-slots. Buying a holder helps maintain order around the press and protects the clamps against unnecessary damage.

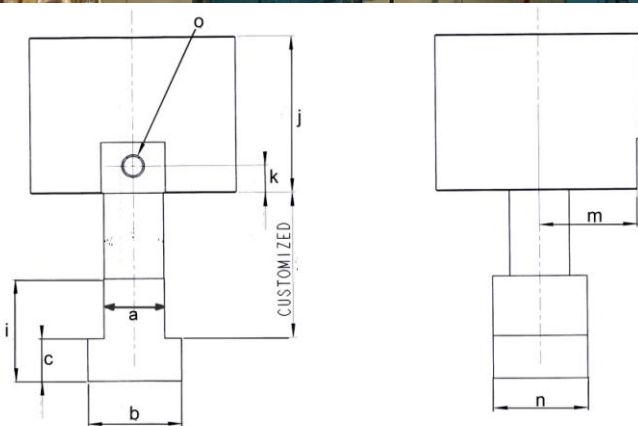
**Choice:** Clamps can be delivered with extra heatproof seals (viton). For warm applications, for instance forging presses.



Above: SCH 100 in holders at the press table

Left: SCH in a holder (incl. pilot valve)

**If an article is to be used at an existing or recently manufactured slot, indicate dimensions a-g**



Dim.	Value/Mass/Mått
a	±0, l
b	±0, l
c	±0, l
h	±0, l
f	±0, l
g	±0, l

Type	Clamping force kN at 200 bar	a	b	c	i	j	k	m	n	Diameter Cylinder body	Holder
SCH 10	10	17,7	28	10	20	45	20	35**	28	40	SCH-H10
SCH 20	20	17,7	28	10	20	60	14	31	28	65	SCH-H20
SCH 40	40	21,7	35	14	28	60	14	31	35	65	SCH-H40
SCH 70	70	27,7	44	18	36	70	14	38	44	80	SCH-H70
SCH 100	100	35,7	54	22	44	92	16	48	54	100	SCH-H100
SCH 150	150	35,7	54	22	44	92	16	57	54	120	SCH-H150

Standard cylinder stroke 6 mm, all kinds and connection ( o )R 1/4"

\*\*Sleeve brazed to the body

CUSTOMISED = Adapted to the requirements of the customer/dies.