

Hydraulic clamps for various die dimensions.

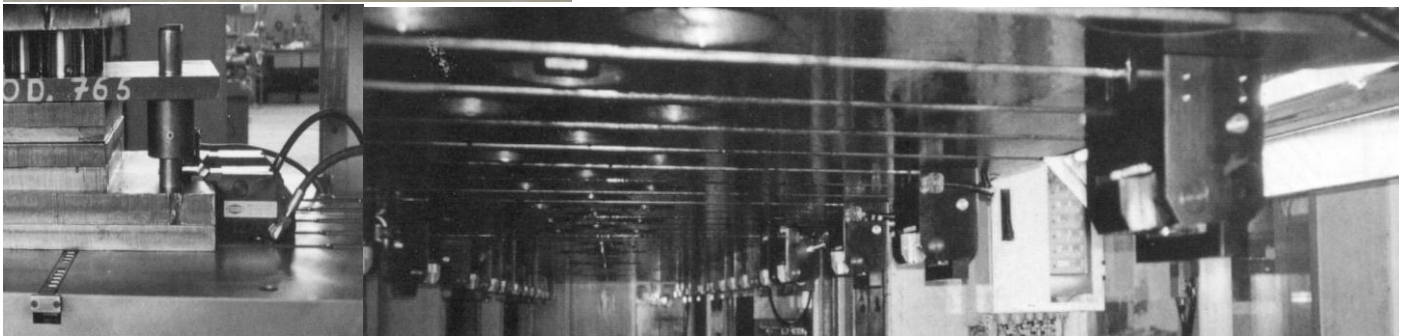


Advantages: Requires a very small die flange (clamping area) on the die.

SKH is also manufactured according to specific demands of the customer regarding flange measurements, T-slots in press etc.

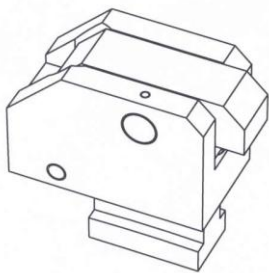
Tenon can be mounted according to choice (90 degrees interval) depending on the angle of the T-slot facing the flange/clamping area.

Below: SKH mounted on press table and slide.



TYPE	Clamping force at 200 bar	d	e	f	j	a	k	l	Stroke	a	b	c	h (min)	h (max)
8	8	58	65	30	20	17	80	25	4	18	30	12	30	36
20	20	63	80	40	20	17	116	35	6	18	30	12	30	36
40	40	78	97	60	20	21	140	40	6	22	37	16	38	45
70	70	98	110	75	25	21	155	50	8	22	37	16	38	45
100	100	98	110	75	25	27	205	50	8	28	46	20	48	56
*200D	200	196	110	75	25	35	205	50	8	36	56	25	61	71

Measure "g" is manufactured according to requirement of the customer.

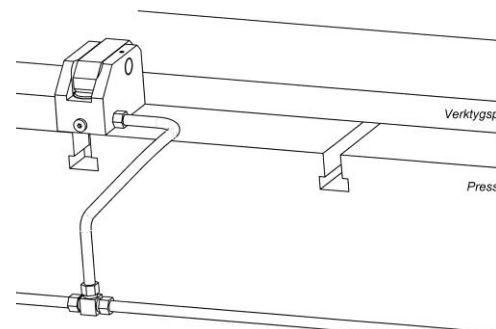
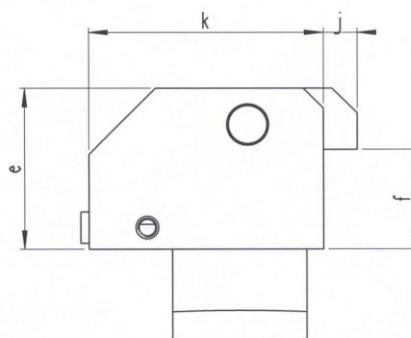
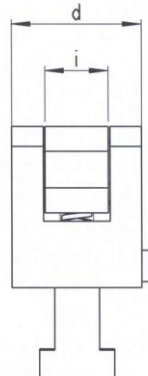


Accessories as below:
Holder SKH. For mounting on the outside of the press.

Extra heat proof seals (Viton) when mounting clamps on hot press tables.

Note!
If an article is to be used at a existing or recently manufactured slot, always use the enclosed dimension print (page 4) when placing an order.

*200D (Ask for prospect)



Example of positioning of SKH on a press