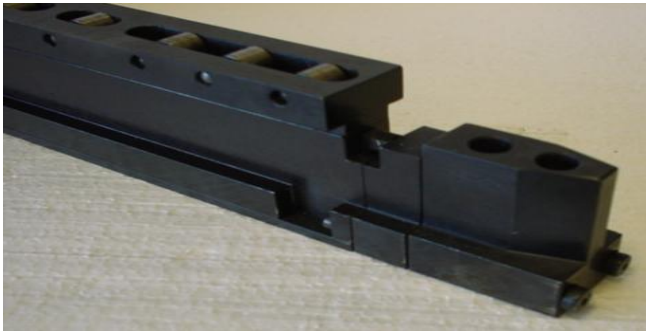


ROS is a double T-ledge for guiding and clamping the die. OS is built on the same principle but does not have rolls. This because the OS is mainly constructed for mounting on the slide, on presses with a fixed ROS ledges on the press table.



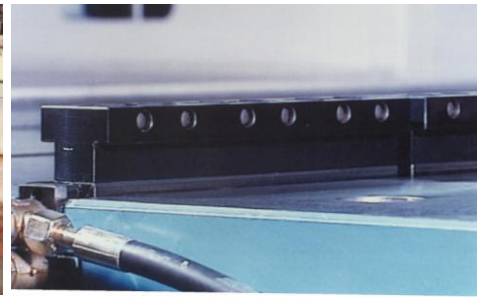
Above: ROS

Advantages: Locks the die with even power across the entire lower/upper part of the die.

Is integrated with the die and press without any external or protruding units.

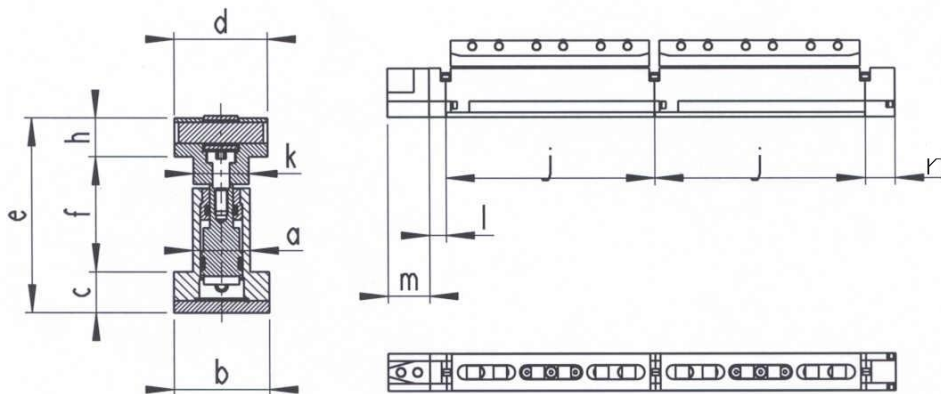
To be considered when mounted: In order to avoid unnecessary wear of the dies/adapaterplate underneath, it is wise to mount a hardened strip (least HRC 58).

Choice: Extra heat proof seals (Viton) when mounting on warm press tables.



Typ ROS	a	b	c	d	e	f	h	j	k	l	m	n	*Clamping force kN/per 250mm/Length	*Lifting capacity kN Per 250mm/Length
22	21	36	15,5	35	73-79	42-48	15,5	250	20	20	50	35	23	32
28	27	45	19,5	44	92-98	53-59	19,5	250	26	20	50	35	31	44
1"	26,3	42	20	40	84.8-90,5	41,5-47,3	23,3	250	24		50		31	44
OS	Measurements, ledges												*Lifting / clamping capacity At 200 bar.	
22	21	36	15,5	35	70-75,7	42-47,7	12,5	250	20	20	50	35		23
28	27	45	19,5	44	88,5-94,5	53-59	16	250	26	20	50	35		31
1"	26,3	42	20	40	83,75-89,45	41,45-47,15	22,3	250	24	20	50	35		31

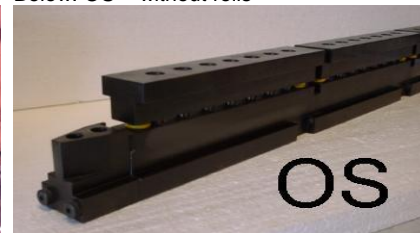
Note: If an article shall be used in an existing or new slot a dimension print (page 4) shall always be enclosed when placing an order.



Below: ROS = with rolls



Below: OS = without rolls



Please contact us for design drawings with tolerances.